



FR-20 Centrifugal Feeder
 Designed for Quiet, High Speed Feeding



Product Overview:

Hoppmann's standard FR-20 feeds and orients a wide variety of parts utilizing a stationary loading ramp and the product's natural weight bias. The delivery rate varies from moderate to high speed depending on part characteristics. Its solid urethane bowl lends itself to machining for product profiling and those unique part feeding applications making the FR-20 a truly versatile and tailor-made feeding base.

Product Specifications:

	ANSI	Metric
A. Outer Wall Diameter	27.25"	693mm
B. Overall Height	24.25" ± 1"	615mm ±25mm
C. Discharge Height	17.5"	445mm
D. Bowl Outside Diameter	24.81"	631mm
E. Rim Width	2.32"	59mm

Standard Models:

Part Number	FR20XXXDSA	FR20XXXASA
Motor Style	DC	AC
Motor Voltage	90V	180V
Horsepower	1/8 hp	93 W
Total Equipment Weight	210 lbs.	95 kg

Standard Features:

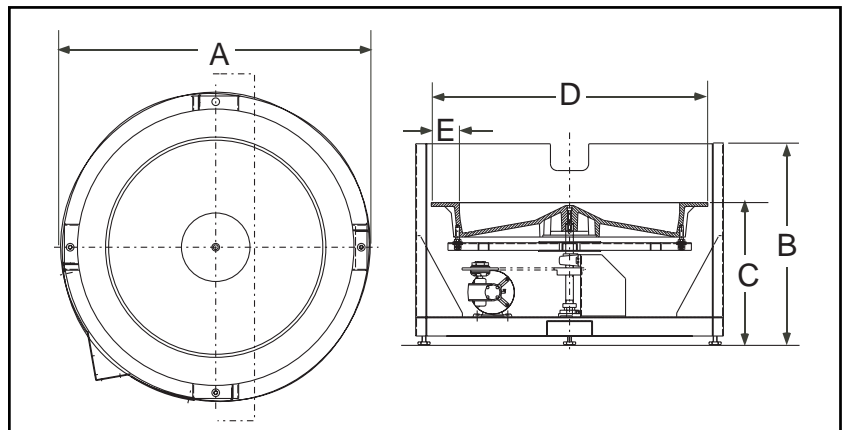
- All stainless steel construction
- Cast urethane bowl
- Panel mount controller card

Available Options:

- Air ramp
- Polycarbonate covers
- Dual motor drive system
- Washdown motor(s)
- NEMA 1 encased controller

Required Accessories:

	CW	CCW
Air Ramp	ARCWFR20SU	ARCCFR20SU
Square Frame		
Backup Ring	BUCWFR20SU	BUCCFR20SU



Hoppmann Corporation strives to improve its products and reserves the right to change or discontinue specifications & designs shown in this brochure without notice and without incurring obligation. 06/05

We Can Handle It.

Your Local Representative:

Automatic Feeder Company Inc.
 921 Albion Avenue Schaumburg, IL 60193-4550
 Phone: (847) 534-2300 Toll-Free: (888) 534-2340 Fax: (847) 534-2354
 www.automaticfeeder.com Email: sales@automaticfeeder.com

