

FS-50-RD Centrifugal Feeder



Product Overview:

Shibuya Hoppmann's standard FS-50 scallop feeder is designed to feed and orient bottles and other cylindrical parts with the use of urethane scallops. Parts are radially oriented and gently qualified in the scallop pockets by means of sweeps, wipers, pneumatic and/or electric devices depending on specific product characteristics. Oriented parts are discharged and carried away by various downstream in-line devices.

Part Number	FS501RLDSA	FS501RLASA
Motor Style	DC	AC
Motor Voltage	90V	230/460V
Horsepower	3/4hp	3/4hp

Standard Features:

- ✓ All stainless steel exterior construction
- ✓ FDA approved ABS vacuum formed disc
- ✓ Teflon hard-coated finished aluminium bowl predrilled for scallop mounting
- ✓ Air clutch
- ✓ Hinged polycarbonate cover with safety interlocks
- ✓ Backup Ring

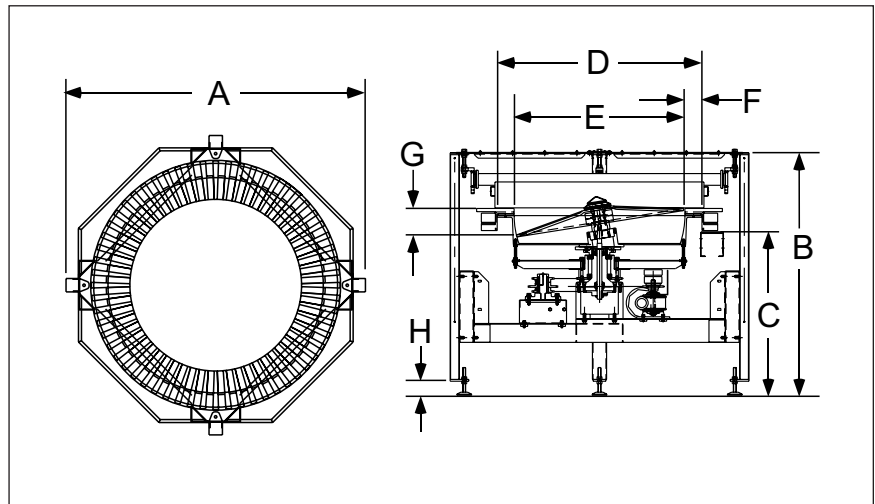
Available Options:

- ✓ Washdown motor(s)
- ✓ Urethane scallop kit
- ✓ NEMA 1 encased controller

Accessories:

FS Series Scallop Kit FS50SCALXX

(includes segment plates and one of the following number of scallops: 36, 48, 54, 60 or 72)



Product Specifications	ANSI	Metric
A Outside Diameter	78.51"	1994mm
B Frame Height	48.50"	1232mm
C Discharge Height	36"	914mm
D Bowl Outside Diameter	56"	1422mm
E Bowl Inside Diameter	47.75"	1213mm
F Rim Width	4.13"	105mm
G Bowl Depth	7.05"	179mm
H Level Foot Adjustment	5" ± 2.5"	127 ± 64mm

Shibuya Hoppmann Corporation strives to improve its products and reserves the right to change or discontinue specifications & designs shown in this brochure without notice and without incurring obligation. Revised: 05/10.

**automatic
feeder
company** inc

Your Local Representative:

Automatic Feeder Company Inc.

921 Albion Avenue Schaumburg, IL 60193-4550

Phone: (847) 534-2300 Toll-Free: (888) 534-2340 Fax: (847) 534-2354

www.automaticfeeder.com Email: sales@automaticfeeder.com



Shibuya Hoppmann

INTEGRATION THROUGH INNOVATION