

FT-15-AC Autoclavable Feeder

Designed for Quiet, High Speed Feeding



Product Overview:

Hoppmann's FT-15 autoclavable centrifugal feeder meets the stringent demands of pharmaceutical feeding applications and is ideally suited to efficiently feed and orient small sterile parts. The delivery rate varies from moderate to high speeds depending on part characteristics. The FT-15-AC is engineered to interface with Hoppmann prefeeders, accumulating conveyors and assembly equipment.

Product Specifications:

	ANSI	Metric
A. Frame Diameter	23"	585mm
B. Overall Height	15.9"	403mm
C. Discharge Height	14" ±1	356mm ±25
D. Bowl Inner Diameter	16"	406mm
E. Bowl Outer Diameter	20.5"	521mm
F. Rim Width	2.25"	57mm
G. Base Height	7.16"	182mm
H. Bowl Top Plate	6"	153mm

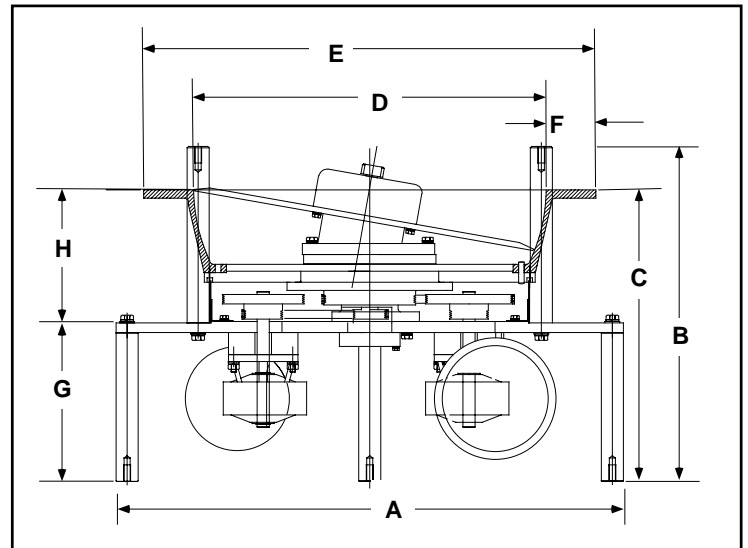
Motor Size	1/5 hp	150 W
Supply Voltage	115 VAC	240 VAC
Motor Voltage	90 VDC	180 VDC
Power Usage	3 amps	2 amps
Weight	150 lbs	70 kg

Standard Features:

- 316L stainless steel bowl and center disc
- Totally enclosed DC variable speed drive
- Quick disassembly of bowl and disc

Standard Options:

- AC Drive motor(s)
- Customized back-up ring
- Dual motor drive system
- Stainless steel construction



Hoppmann Corporation continually strives to improve its products. Therefore, Hoppmann reserves the right to change or discontinue specifications and designs shown in this brochure without notice and without incurring obligation. 7/05

We Can Handle It.

Your Local Representative:

Automatic Feeder Company Inc.
 921 Albion Avenue Schaumburg, IL 60193-4550
 Phone: (847) 534-2300 Toll-Free: (888) 534-2340 Fax: (847) 534-2354
 www.automaticfeeder.com Email: sales@automaticfeeder.com

**automatic
 feeder
 company** INC