

# FT-60-RD Centrifugal Feeder



## Standard Features:

- ✓ All stainless steel exterior construction
- ✓ FDA approved ABS vacuum formed disc
- ✓ Teflon hard-coated finished aluminium bowl

## Available Options:

- ✓ Polycarbonate covers
- ✓ Dual motor drive system
- ✓ Washdown motor(s)
- ✓ NEMA 1 encased controller

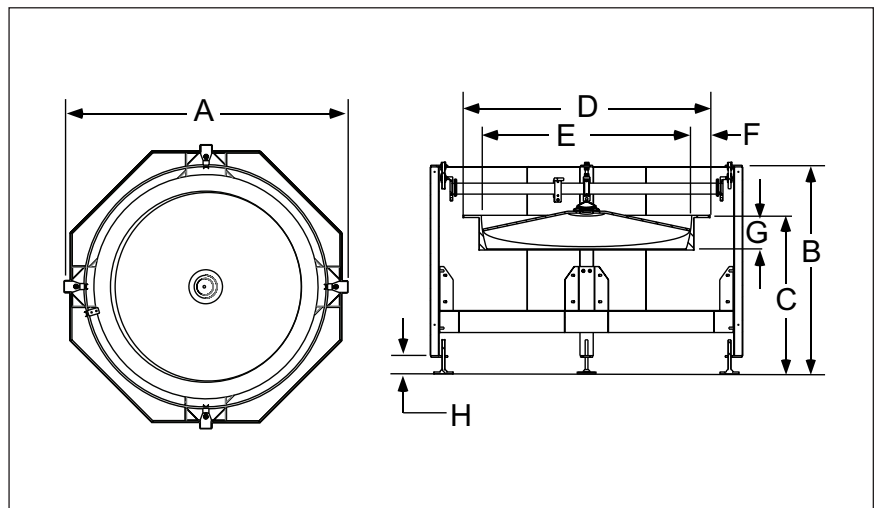
## Required Accessories:

Clockwise: Backup Ring	BUCWFT60SU
Counter-Clockwise: Backup Ring	BUCCT60SU

## Product Overview:

Shibuya Hoppmann's standard FT-60 rigid disc centrifugal feeder is designed to feed a variety of products with it's unique bowl design. Product is metered into the bowl and brought out to the bowl rim where a series of qualifiers gently orient the part for transfer to various downstream inline devices.

Part Number	FT601RLDSA	FT601RLASA
Motor Style	DC	AC
Motor Voltage	90V	208-230/460V
Horsepower	3/4hp	3/4hp
Total Equipment Weight	1400 lbs.	635 kg



Product Specifications	ANSI	Metric
A Outside Diameter	85"	2159mm
B Frame Height	47" ± 1.5"	1194 ± 40mm
C Discharge Height	36" ± 2"	914 ± 51mm
D Bowl Outside Diameter	70"	1778mm
E Bowl Inside Diameter	60"	1524mm
F Rim Width	5"	127mm
G Bowl Depth	9.13"	232mm
H Level Foot Adjustment	5" ± 2.5"	127 ± 64mm

Shibuya Hoppmann Corporation strives to improve its products and reserves the right to change or discontinue specifications & designs shown in this brochure without notice and without incurring obligation. Revised: 05/10.

**automatic  
feeder  
company** inc

## Your Local Representative:

### Automatic Feeder Company Inc.

921 Albion Avenue Schaumburg, IL 60193-4550

Phone: (847) 534-2300 Toll-Free: (888) 534-2340 Fax: (847) 534-2354

www.automaticfeeder.com Email: sales@automaticfeeder.com



**Shibuya Hoppmann**

INTEGRATION THROUGH INNOVATION