

EP-35/50 Elevating Prefeeder



Standard Features:

- ✓ Stainless steel construction
- ✓ Belting is FDA/USDA approved white 1-ply solid woven polyester fabric with .156" thick white PVC coating and PVC cleats
- ✓ Hopper cleanout door

Available Options:

- ✓ Elevator extensions*
- ✓ Hopper extension for 50 ft³ capacity
- ✓ Continuous welded hopper seams
- ✓ Elevator/hopper covers
- ✓ Washdown motor
- ✓ NEMA 1 encased controller
- ✓ Casters

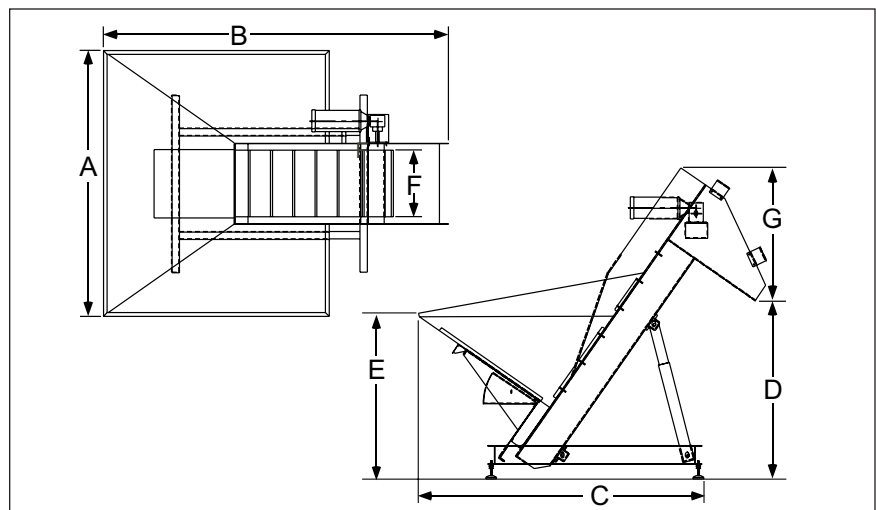
* It is strongly recommended that the frame of the prefeeder be reinforced and/or additionally supported for elevator extensions of 54" or greater.

Shibuya Hoppmann Corporation strives to improve its products and reserves the right to change or discontinue specifications & designs shown in this brochure without notice and without incurring obligation. Revised: 05/10.

Product Overview:

The EP-35/EP-50 elevating prefeeder is designed to handle a variety of large, lightweight parts. Its 35 ft³ capacity hopper delivers product at an average belt speed of 23 feet per minute. The cleated elevator belt has a nominal cleat height of 3.00" and a cleat pitch of 12.00" allowing for maximum product loading. A heavy duty variable speed motor helps to ensure proper product metering. **Note: Controllers and mechanical level sensors are not supplied with this unit.**

Part Number	EP3518XDSA	EP3518XASA
Motor Style	DC	AC
Motor Voltage	90V	230/460V
Horsepower	1/2hp	373w
Total Equipment Weight	1200 lbs.	544 kg
Hopper Capacity (EP-35/EP-50)	35 ft ³ / 50 ft ³	991 / 1416 liters



Product Specifications	ANSI	Metric
A Overall Width	72"	1829mm
B Overall Length	95"	2413mm
C Lower Chassis Footprint	76.62"	1947mm
D Dump Height (Adjustable)	45 - 58"	1143 - 1473mm
E Hopper Load Height (EP-35)	45"	1143mm
E Hopper Load Height (EP-50)	51"	1295mm
F Belt Width	18"	457mm
G Discharge Chute Height	25.5"	648mm

**automatic
feeder
company** inc.

Your Local Representative:

Automatic Feeder Company Inc.

921 Albion Avenue Schaumburg, IL 60193-4550

Phone: (847) 534-2300 Toll-Free: (888) 534-2340 Fax: (847) 534-2354

www.automaticfeeder.com Email: sales@automaticfeeder.com



Shibuya Hoppmann

INTEGRATION THROUGH INNOVATION